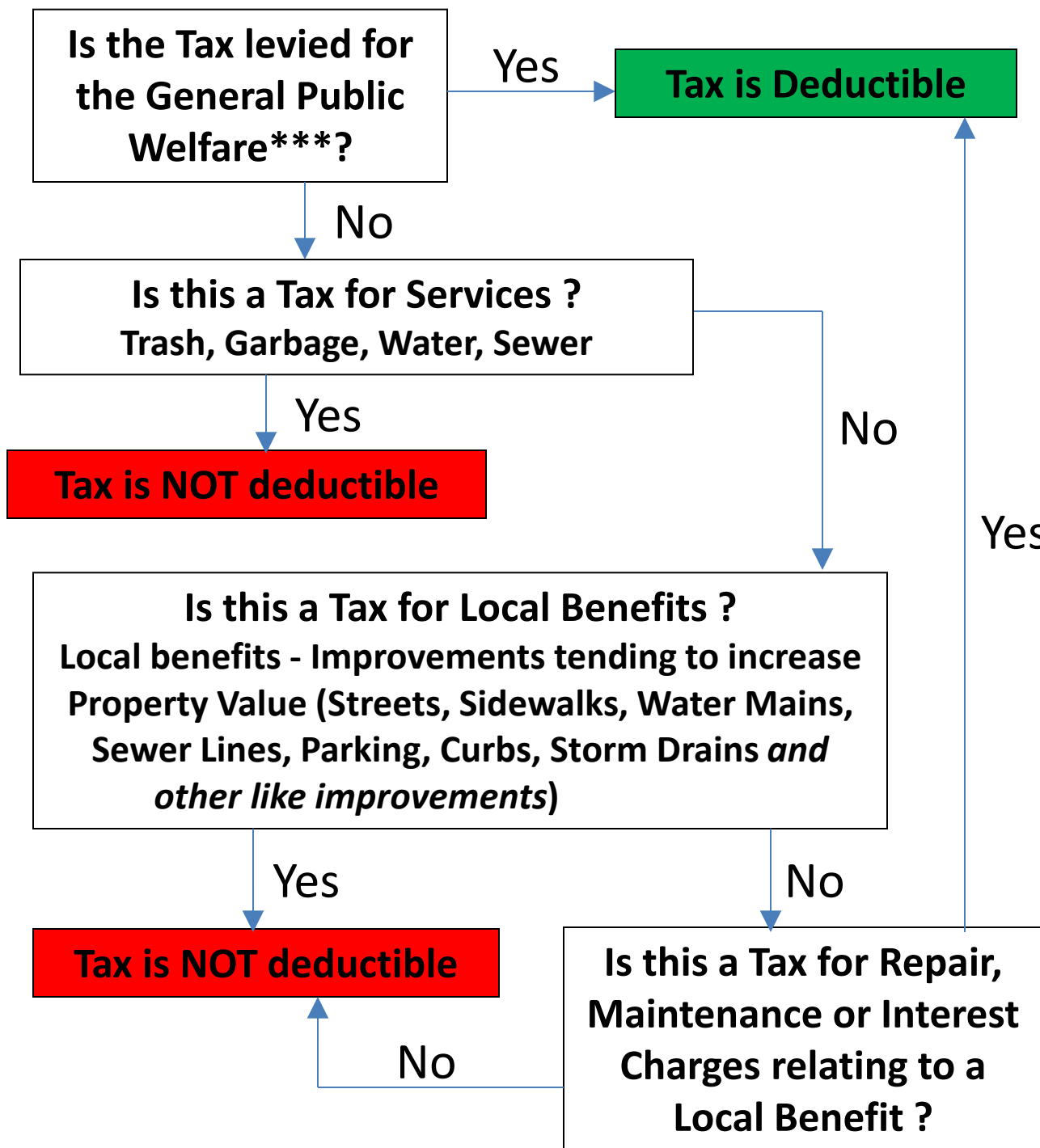


# Real Estate Tax Deduction

March 12, 2013



\*\*\*Applied uniformly against all property under the jurisdiction of the taxing authority e.g. Elementary School, High School, Community College School Bonds, Park and Rec, Library, Emergency Medical, Paramedic, EMC, Flood Control, Vector Control, Mosquito Abatement, Park Safety, Fire Prevention Fee